

The background features abstract geometric shapes in shades of blue and grey. On the left, a solid blue shape curves upwards. On the right, several overlapping, semi-transparent shapes in various shades of blue and grey create a layered, dynamic effect.

# Scholarships, Bursaries, and Awards

**MYTH:**  
Scholarships are just for “*Brainiac's*”

**TRUTH:**  
There are thousands of awards  
available for ALL students!

# HERE'S WHAT'S TRUE:



Being Prepared Makes All the Difference

# KEEPING INFORMED

GWG Careers Website

<https://gwgss.sd33.bc.ca/career-centre>

Follow us on Social Media!

Instagram [@gwg\\_careers](#)

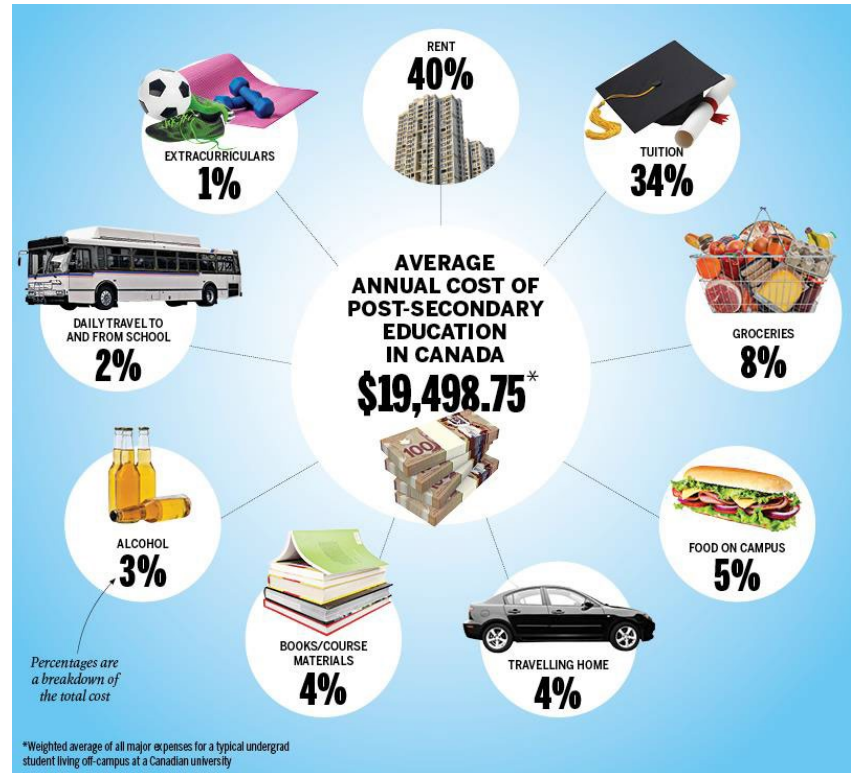
Facebook [@G.W. Graham Secondary Careers](#)



# How Much Does Post-Secondary Cost?

Post secondary education can be expensive.  
Make a budget and remember the hidden costs!

- ❖ Application Fees
- ❖ Registration Fees
- ❖ Tuition Fees
- ❖ Textbooks
- ❖ Housing Cost
- ❖ Medical/Dental Fees
- ❖ Student Union Fees
- ❖ Transportation and Parking
- ❖ Living Expenses



# Where Will the Money Come From?

- ❖ Family Contributions
- ❖ Paid Work
- ❖ Student Savings
- ❖ Student Loans
- ❖ Scholarships
- ❖ Bursaries
- ❖ Awards

**SADLY....STUDENTS DON'T APPLY**

**WHY?**

Did they believe the myth?

Did they not feel prepared?

Did they wonder if it was worth the effort?

# Is it Worth the Effort?

YES!

If you work on your scholarship applications for 5 hours and you win just one \$500.00 award you just made 100 / hour





# IS IT WORTH THE EFFORT?

## Why Should **YOU** Apply?

- ❖ **Money** – specifically, money you don't have to pay back.
- ❖ **Resume Builder** – what better way is there to impress a future employer? Awards look great on graduate applications as well.
- ❖ **Compound Interest** – winning an award is a stepping stone for winning others.
- ❖ **Personal Satisfaction** a.k.a. The Glory – it's nice to get a little recognition for all the hard work!



# Here's What's True:

You Can't Win if You Don't Apply!

Being Prepared Makes All the Difference!

There a thousands of dollars in scholarships, bursaries and awards that go unclaimed each year.

# Who are Scholarship Providers Looking to Reward?

- ❖ **Originality and Passion** – what makes you stand out from others?
- ❖ **Volunteering & Community Service** – do you give back to the community?
- ❖ **Leadership and Initiative** – are you a founding member or have you taken an active role in a club or organization?
- ❖ **Talent** – are you a painter? Future singer? Do you have a vision? Scholarships reward fresh thinking and new ideas.
- ❖ **Special Targeted Areas** – specific heritage or cultural background, gender, special needs,
- ❖ **Academic merit**
- ❖ **Financial Need**

# WHERE TO START?

- ❖ Volunteering – See Mrs. Wiseman
- ❖ Add more extracurricular activities
- ❖ Create your [Scholarship Resume](#)
- ❖ Familiarize yourself with the [School website](#) ( financial awards)
- ❖ Follow the GW Graham Careers Instagram [@gwg\\_careers](#)
- ❖ Follow and Like on Facebook [@G.W. Graham Secondary Careers](#)
- ❖ Sign up for different scholarship accounts
- ❖ Create a spreadsheet of Scholarships researched
- ❖ Starting writing your [career statement](#) (if you know what your planning on going into)
- ❖ Identify references and speak to them, sharing your resume

# Increase Your Chances of Winning

- Apply for everything you are eligible for
- Read the application carefully
- Include everything requested
- Don't add extras
- Answer the questions or essay point
- Don't miss the deadline
- Apply for smaller scholarships – Less people apply for these making your chances of winning higher!



# EXTERNAL AWARDS

These awards are decided upon by donors, groups, affiliations or individuals.

# EXTERNAL AWARDS

Students must complete the [application form](#) with the required attachments and submit for each scholarship. The school submits the package to the donor group for you. Listing of Scholarships is on school website.

\*Please note: Any Chilliwack Foundation awards require a different specific application form\*\*

**Deadline is February 25, 2021 by noon  
NO LATE APPLICATIONS ARE ACCEPTED**

# ENTRANCE SCHOLARSHIPS & POST-SECONDARY INSTITUTION

Each Institution has a financial aid program that includes entrance scholarships and bursaries. You must apply directly to the post-secondary institution and check the website for information and deadlines.

**THESE ARE BASED ON ACADEMIC STANDING**

**\*\*Make sure to submit your marks and STS \*\***



# AFFILIATION SCHOLARSHIPS

Eligibility for these awards are usually determined by connection to a sports association, trade union, company or demographic group. There are also awards for students with medical conditions. The Military also offers scholarships. Awards are offered throughout the year and deadlines vary by the individual scholarship.

# PROVINCIAL SCHOLARSHIPS PROGRAM

## **BC Excellence Scholarships \$5000**

1 student is nominated and selected per school. GWG decides

*Deadline December 14, 2020*

<https://www2.gov.bc.ca/gov/content/education-training/k-12/support/scholarships/provincial-scholarships/bc-excellence-scholarships>

## **BC Achievement Scholarships \$1250**

No need to apply based on academic achievement (including elective courses)  
in Grades 10, 11 & 12

<https://gwg.sd33.bc.ca/bc-provincial-scholarships>

## **Pathway to Teacher Education Scholarship \$5000**

Student applies directly to Ministry of Education.

<https://www2.gov.bc.ca/gov/content/education-training/k-12/support/scholarships/provincial-scholarships/pathway-to-teacher-education-scholarship>

## **District Authority \$1250**

<https://gwg.sd33.bc.ca/bc-provincial-scholarships>

*Deadline is April 14 by noon*

# INTERNAL AWARDS

These awards are decided upon by a group of teachers, counsellors, and administrators at the school level

# INTERNAL AWARDS

Students must complete the application package. Make sure all parts are included. The student submits application online. Listing of awards is on school website.

**Deadline is February 11, 2021 by noon  
NO LATE APPLICATIONS WILL BE ACCEPTED**

# SCHOLARSHIPS

## DECIDED BY THE GWSC

(GW SCHOLARSHIP COMMITTEE)

|                         |                      |
|-------------------------|----------------------|
| 1. Loran Scholars       | \$100,000            |
| 2. Schulich Scholarship | \$80,000 - \$100,000 |
| 3. Cmolik               | \$35,000             |
| 4. BC Excellence        | \$5,000              |
| 5. District Authority   | \$1,250              |
| 6. GW Internal Awards   | \$250 - \$1,000      |

Deadline Dates Vary

# LORAN SCHOLARS

*Students must demonstrate integrity, courage, grit, personal autonomy, a commitment to serving others and overall leadership potential*

## **GWG Sponsors 1 student**

To be considered, student's must hand in Scholarship information to Mrs. Willock:

1. Scholarship Resume
  2. Essay Questions – Double spaced
- See website for more info

**Deadline was September 30**

# SCHULICH SCHOLARSHIP

*Student must be entrepreneurial-minded and plan to enroll in a **STEM** program (Science, Technology, Engineering or Math) at a [partner university](#).*

*Must meet at least 2 for the following criteria:*

- *Academic excellence*
- *Leadership (community, business or entrepreneurial)*
- *Financial need*

## **GWG can Sponsor 1 student**

To be considered, student's must hand in to Mrs. Willock:

1. Scholarship Resume
2. Essay Questions – Double spaced
  - <https://www.schulichleaders.com/#slide-about>

**Deadline has been revised to December 14, 2020**

# BC EXCELLENCE SCHOLARSHIPS

*Students must demonstrate a strong academics and overall leadership potential*

**GWG can Sponsor 1 student**

To be considered, hand in the following to Mrs. Willock:

1. Scholarship Resume
2. Essay Questions – Double spaced
  - <https://www2.gov.bc.ca/gov/content/education-training/k-12/support/scholarships/provincial-scholarships/bc-excellence-scholarships>

**Deadline has been revised to December 14, 2020**



# CMOLIK SCHOLARSHIPS

*Students must have faced adversity in their lives and demonstrated tenacity and have financial needs and capable of succeeding at the post secondary level. (ineligible for the BC Tuition Waiver Program)*

**GWSC can Sponsor 1 student**

To be considered, student's must hand in to Mrs. Willock:

1. Scholarship Resume
2. Essay Questions – Double spaced
  - <https://www.thecmolikfoundation.com/scholarships/>

**Deadline is January 11**

# District Authority Scholarships

Specialty Areas and *Sub Areas* includes:

- INDIGENOUS LANGUAGES AND CULTURE (*Aboriginal studies*)
- FINE ARTS (*Visual Arts, Dance, Drama, Music, Choir*)
- APPLIED SKILLS (*Business Education, Technology Education, Home Economics*)
- PHYSICAL ACTIVITY (*Athletics, Physical Education, Academies*)
- INTERNATIONAL LANGUAGES (*French, French Immersion, Spanish*)
- TECHNICAL and TRADES TRAINING (*District Partnership Programs*)
- COMMUNITY SERVICE (*Must Provide List of Signed Service Hours*)

Amount of these awards is \$1250 and students are chosen by a GWSC (GW Scholarship committee)

**Due April 21, 2021, by noon**

# WHAT WILL GW GRAHAM GRAD LEGACY BE?

Good Luck!!



# Important Upcoming Dates

- Choose BC Day/PSI Virtual Day Oct 19, 2-6pm & Oct 20, 3-7pm
- Internal Scholarship Session Nov 5 @ 2:15-3:15pm
- External Scholarship Session Dec 1 & 3 @ 2:15-3:15pm
- Internal Scholarship Deadline Feb 11
- External Scholarship Deadline Feb 25
- Scholarship Q & A Session  
Nov 19 @ 2:15-3:00pm  
Dec 10 @ 2:15-3:00pm  
Jan 14 @ 2:15-3:00pm  
Jan 21 @ 2:15-3:00pm

# Things to Know and Remember

- ❖ Don't wait until the night before to submit applications
- ❖ Create a package that makes you stand out!
- ❖ Take the time to do things right
  - Read instructions and fill out application carefully
  - Watch your word count and do not go over
  - Know your deadlines
  - Make sure you have sufficient postage



**GOOD LUCK!**  
**NOW LET'S GET STARTED**



# KEEPING INFORMED

GWG Careers Website

<https://gwgss.sd33.bc.ca/career-centre>

Follow us on Social Media!

Instagram [@gwg\\_careers](#)

Facebook [@G.W. Graham Secondary Careers](#)

